



TOWN OF APEX

Apex Business Park



Less than one mile from US Highway 1, Apex Business Park offers cleared and graded sites complete with all utilities. The park has a total of 25 buildable acres and is well-suited for small to mid-sized businesses. It is zoned light industrial and has curb and gutter in place.

Ready To Go

When buying land, the last thing you want are surprises. With that in mind, the Apex Business Park has undergone a series of tests to ensure it's ready when you are.

The following sitework has already been performed:

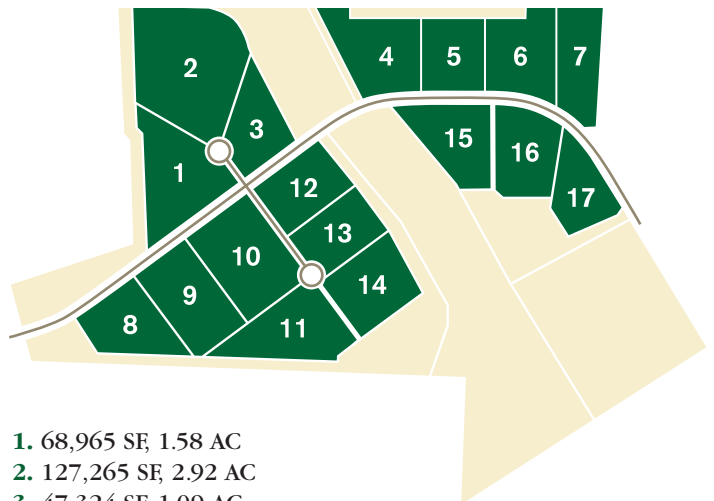
- Phase 1 environmental audit
- Geotechnical studies
- Boundary survey
- Wetland delineation
- Archeological findings
- 100-year flood evaluations
- Rare and endangered plant/animal report

For sales information, please contact:

Matt DesVergers
Sigma Realty
919-796-0947



Site Plan*



- | | |
|------------------------|------------------------|
| 1. 68,965 SF, 1.58 AC | 11. 78,371 SF, 1.80 AC |
| 2. 127,265 SF, 2.92 AC | 12. 49,731 SF, 1.14 AC |
| 3. 47,324 SF, 1.09 AC | 13. 49,833 SF, 1.14 AC |
| 4. 66,007 SF, 1.52 AC | 14. 67,006 SF, 1.54 AC |
| 5. 44,000 SF, 1.01 AC | 15. 51,007 SF, 1.17 AC |
| 6. 55,817 SF, 1.28 AC | 16. 51,832 SF, 1.19 AC |
| 7. 45,917 SF, 1.05 AC | 17. 44,406 SF, 1.02 AC |
| 8. 64,936 SF, 1.49 AC | |
| 9. 63,609 SF, 1.46 AC | |
| 10. 70,351 SF, 1.62 AC | |

*Any or all parcels may be combined to create one or two large tracts.

For more information about locating your business in Apex, featured properties, or other processes of the Town, please contact Bruce Radford, Apex Town Manager at 919-249-3400 or bruce.radford@apexnc.org

